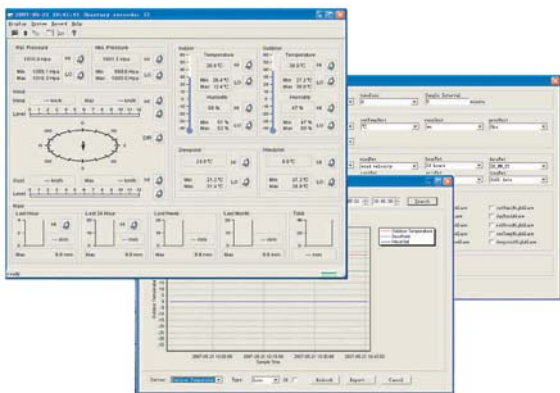
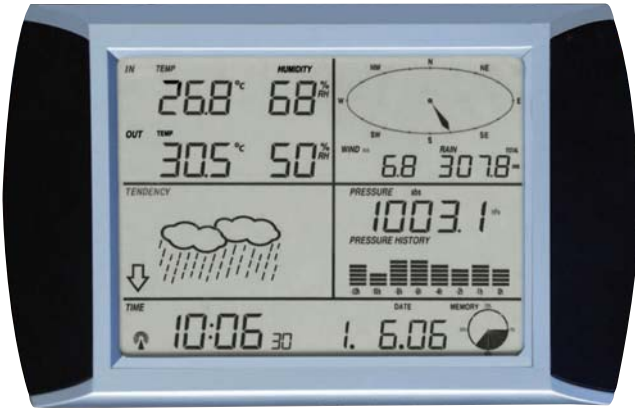


Nevada WS1080PC

Professional touch screen weather station with PC interface



USB

Connection to computer via USB port for collecting all weather data



Wind direction

Displays wind direction transmitted via 433MHz or 868MHz or 915MHz



Thermo-Hygro Sensor

Measures temperature and humidity and transmits data to the monitor via 433MHz or 868MHz signals



Radio Controlled Time

Receives radio controlled time



Indoor Temperature

Displays indoor temperature



Outdoor Temperature

Displays outdoor temperature via 433MHz or 868MHz or 915MHz signals



Indoor Humidity

Displays indoor relative humidity as a %



Outdoor Humidity

Displays outdoor humidity via 433MHz or 868MHz or 915MHz signals



Pressure History

Displays pressure history in the form of a bar graph



Rainfall History

Displays rainfall history



Minimum/Maximum

Displays the minimum and maximum temperature recorded



Day

Displays date/time



Weekday

Displays weekday



Pressure

Displays pressure in hpa or inhg



Rain Gauge

Uses a rain gauge to measure rainfall: date transmitted via a connected wire to thermo-hygro transmitter, then thermo-hygro transmitter transmitted data to station via 433MHz or 868MHz or 915MHz signals



Weather Forecast

Weather forecasting symbols showing forecast and weather tendency symbols: Sunny, Cloudy with sunny intervals, Raining



Wind Speed

Displays wind speed transmitted via 433MHz or 868MHz or 915MHz signals



°C/°F

Selectable to degrees Celsius of degrees Fahrenheit



Time

Displays time